

If I Can't Have You

Shawn Mendes

♩ = 124

Chorus

G
let ring throughout

F# m

Em7

F# m

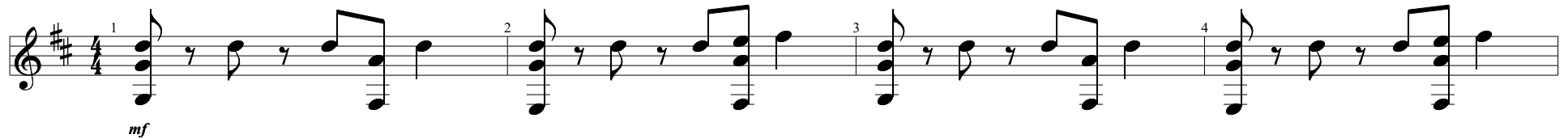
G

F# m

Em7

F# m

Guitar



G

F# m

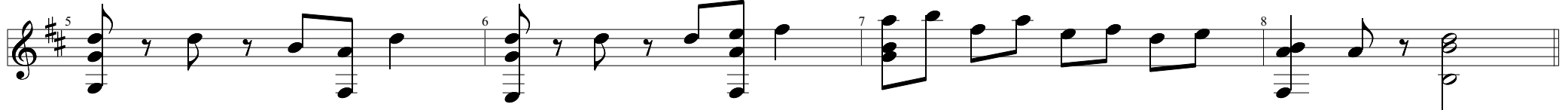
Em7

F# m

G

F# m

Bm



Verse 1

G

F# m

Bm

Em

F# m

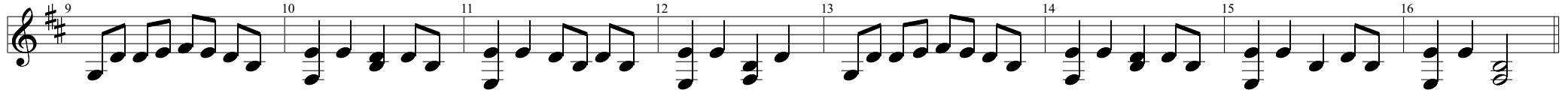
G

F# m

Bm

Em

F# m



Pre-Chorus

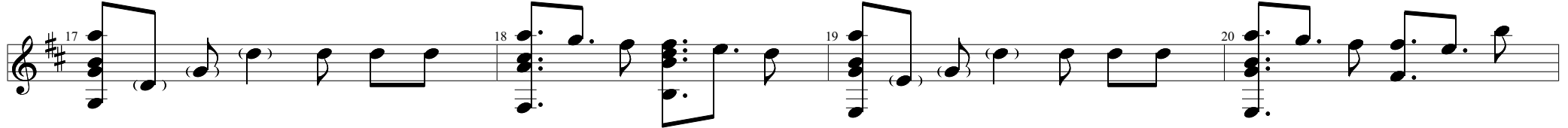
G

F# m

Bm

Em

F# m



G

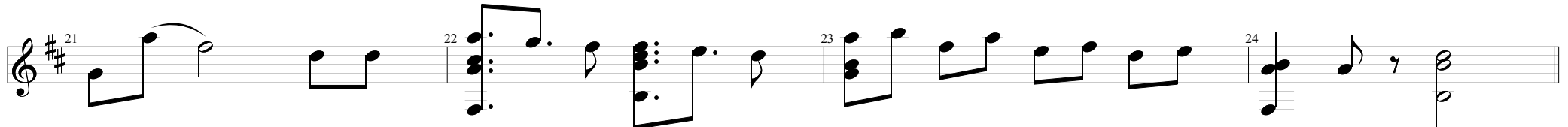
F# m

Bm

G

F# m

Bm



Chorus

Chorus musical notation (Measures 25-32). The key signature is G major (one sharp). The notation is written on a single staff. Chord changes are indicated above the staff: G, F#m, Em7, F#m, G, F#m, Em7, F#m, G, F#m, Em7, F#m, G, F#m, Bm. Measure numbers 25, 26, 27, 28, 29, 30, 31, and 32 are marked at the beginning of their respective measures.

Verse 2

Verse 2 musical notation (Measures 33-40). The key signature is G major (one sharp). The notation is written on a single staff. Chord changes are indicated above the staff: G, F#m, Bm, Em, F#m, G, F#m, Bm, Em, F#m. Measure numbers 33, 34, 35, 36, 37, 38, 39, and 40 are marked at the beginning of their respective measures.

Pre-Chorus

Pre-Chorus musical notation (Measures 41-48). The key signature is G major (one sharp). The notation is written on a single staff. Chord changes are indicated above the staff: G, F#m, Bm, Em, F#m, G, F#m, Bm. Measure numbers 41, 42, 43, 44, 45, 46, 47, and 48 are marked at the beginning of their respective measures.

Chorus

Chorus musical notation (Measures 49-56). The key signature is one sharp (F#). The notation is written on two staves. Chords are indicated above the notes.

Measure 49: G (treble), F#m (bass).
Measure 50: Em7 (treble), F#m (bass).
Measure 51: G (treble), F#m (bass).
Measure 52: Em7 (treble), F#m (bass).
Measure 53: G (treble), F#m (bass).
Measure 54: Em7 (treble), F#m (bass).
Measure 55: G (treble), F#m (bass).
Measure 56: F#m (treble), Bm (bass).

Bridge

Bridge musical notation (Measures 57-64). The key signature is one sharp (F#). The notation is written on two staves. Chords are indicated above the notes.

Measure 57: G (treble), F#m (bass).
Measure 58: Bm (treble), Bm (bass).
Measure 59: Em (treble), F#m (bass).
Measure 60: F#m (treble), F#m (bass).
Measure 61: G (treble), F#m (bass).
Measure 62: Bm (treble), Bm (bass).
Measure 63: G (treble), F#m (bass).
Measure 64: F#m (treble), F#m (bass).

Chorus Silent

Chorus Silent musical notation (Measures 65-72). The key signature is one sharp (F#). The notation is written on two staves. Chords are indicated above the notes.

Measure 65: G (treble), Em7 (bass).
Measure 66: G (treble), Em7 (bass).
Measure 67: G (treble), Em7 (bass).
Measure 68: G (treble), Em7 (bass).
Measure 69: G (treble), Em7 (bass).
Measure 70: G (treble), Em7 (bass).
Measure 71: G (treble), Em7 (bass).
Measure 72: F#m (treble), F#m (bass).

Chorus

73 G F#m Em7 F#m G F#m Em7 F#m

77 G F#m Em7 F#m G F#m Bm

78 79 80 81