

Это же я

МакСим

♩ = 102

Guitar

Cmaj7
Capo. fret 2
let ring throughout

G

Am7

mf

Verse 1

Em

Am7

B7

Em

Am

B7

C

Em

C

B7

Em

B7

Verse 2

Em Am B7 Em

Measures 29-45 of Verse 2. The key signature has one sharp (F#). The notation is on a single staff. Measure numbers 29, 30, 31, 32, 33, 34, 35, 36, 37, 38, 39, 40, 41, 42, 43, 44, and 45 are indicated below the staff. Chord changes are marked above the staff: Em at 29, Am at 31, B7 at 32, Em at 33, Am at 35, B7 at 36, C at 37, Em at 39, C at 41, B7 at 42, and Em at 44. The melody consists of eighth and quarter notes, often beamed together.

Chorus

C D Em D C

Measures 46-57 of the Chorus. The key signature has one sharp (F#). The notation is on a single staff. Measure numbers 46, 47, 48, 49, 50, 51, 52, 53, 54, 55, 56, and 57 are indicated below the staff. Chord changes are marked above the staff: C at 46, D at 47, Em at 48, D at 49, and C at 50. A double bar line with repeat dots appears at measure 50. A 'CAPO 3' instruction is in a box above measure 56. The melody features a mix of eighth, quarter, and half notes.

Verse 3

Em Am B7 Em

Measures 58-63 of Verse 3. The key signature has one sharp (F#). The notation is on a single staff. Measure numbers 58, 59, 60, 61, 62, and 63 are indicated below the staff. Chord changes are marked above the staff: Em at 58, Am at 60, B7 at 61, and Em at 62. The melody continues with eighth and quarter notes.

Am B7 C Em

64 65 66 67 68 69

C B7 Em

70 71 72 73 74

Chorus

C D Em D C Am

75 76 77 78 79 80

Bridge
Cmaj7

D Em

81 82 83 84 85 86 87

♩ = 102 *rall.* ----- ♩ = 82 *accel.* -----

Am D Em D

88 89 90 91 92 93

accel. --- ♩ = 102

Chorus

C

Cmaj7

Em

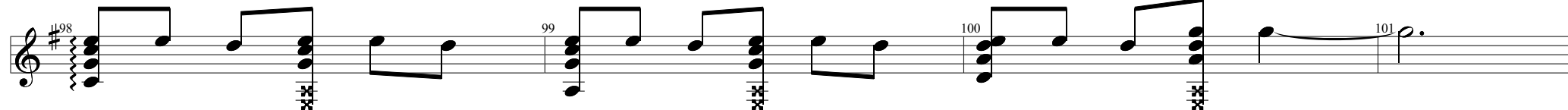


C

Am7

Dsus2

Dsus4

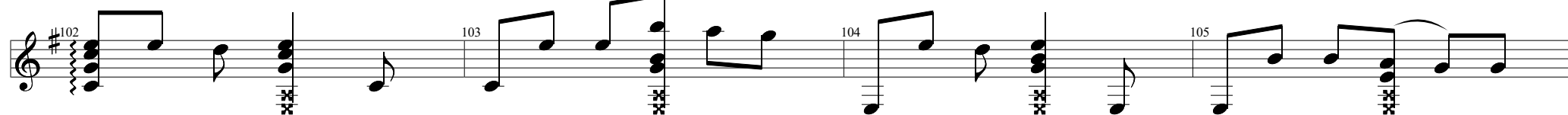


Ending

C

Cmaj7

Em



C

Am7

Dsus2

Em

