

# Faded

Alan Walker

♩ = 90

Ukulele

Em  
*let ring throughout*

1 2 3 4

*mf*

## Verse 1

Em

5 6 7 8

Em

9 10 11 12

## Pre-Chorus

Em

13 14 15 16

Em

17 18 19 20

## Chorus

Em

21 22 23 24

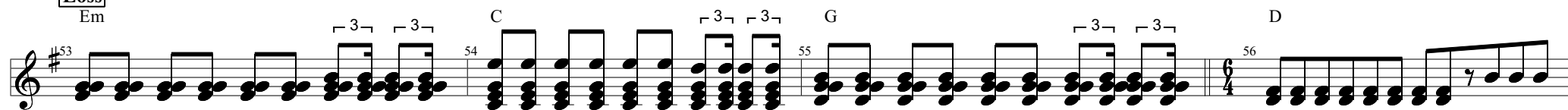
3 3 3 3 3 3 3 3

The image displays a musical score for guitar, written in E major (one sharp, F#). The score is organized into six systems, each containing a single staff of music. Chord names (Em, C, G, D) are placed above the staff to indicate the harmonic structure. Measure numbers are provided at the beginning and end of each system.

- System 1 (Measures 25-28):** Features a sequence of chords: Em (measures 25-26), C (measures 27-28), G (measure 29), and D (measures 30-31). It includes triplets in measures 25, 26, 27, and 28.
- System 2 (Measures 29-32):** Continues the sequence with Em (measures 29-30), C (measures 31-32), G (measures 33-34), and D (measures 35-36). It includes triplets in measures 29, 30, 31, and 32.
- System 3 (Measures 33-36):** Features Em (measures 33-34), C (measures 35-36), G (measures 37-38), and D (measures 39-40). It includes triplets in measures 33, 34, 35, and 36.
- System 4 (Measures 37-40):** Labeled "Verse 2", this system contains Em (measures 37-38), C (measures 39-40), G (measures 41-42), and D (measures 43-44). It includes triplets in measures 37, 38, 39, and 40.
- System 5 (Measures 41-44):** Continues the "Verse 2" section with Em (measures 41-42), C (measures 43-44), G (measures 45-46), and D (measures 47-48). It includes triplets in measures 41, 42, 43, and 44.
- System 6 (Measures 45-52):** Labeled "Pre-Chorus", this system contains Em (measures 45-46), C (measures 47-48), G (measures 49-50), and D (measures 51-52). It includes triplets in measures 45, 46, 47, and 48.

**Loss**

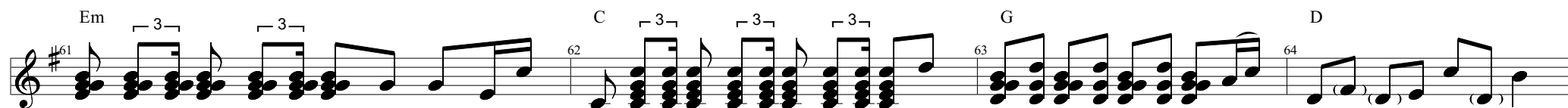
Em

**Chorus**

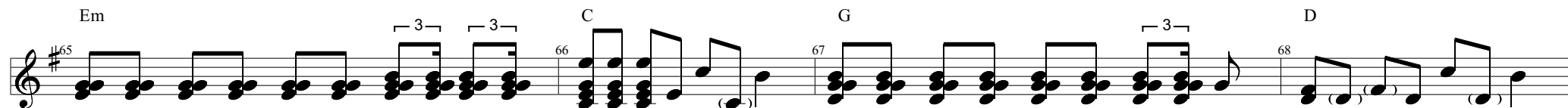
Em



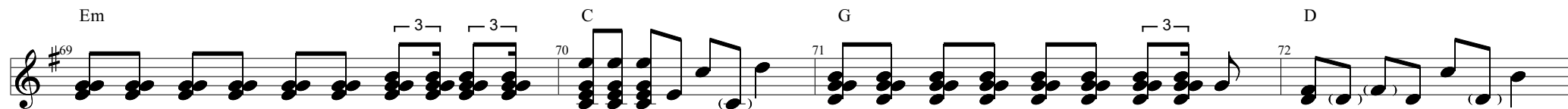
Em



Em



Em

**Ending**

Am

