

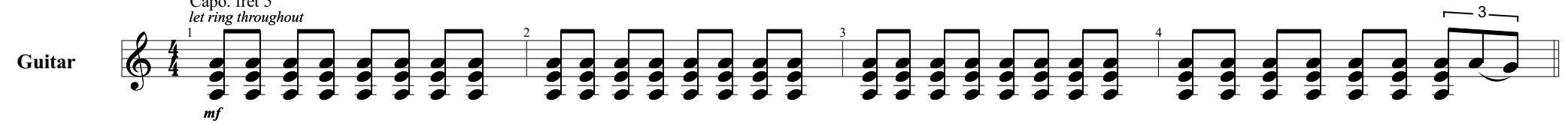
't Smidje

Laïs

♩ = 135

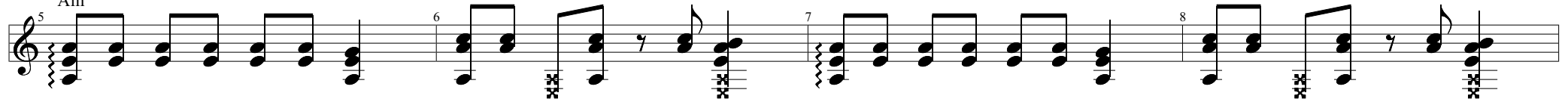
(♩ = ³♩)
Am
Capo. fret 5
let ring throughout

Guitar



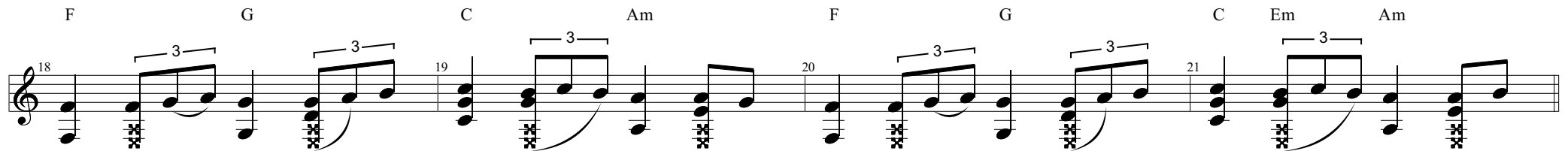
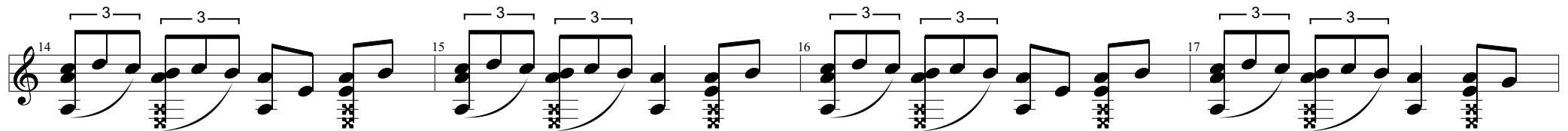
Intro

Am



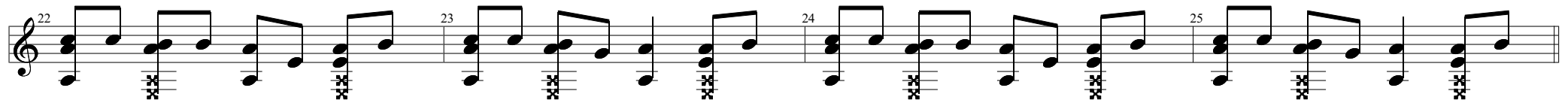
Loss

Am



Verse 1

Am

**Chorus**

F

G

C

Am

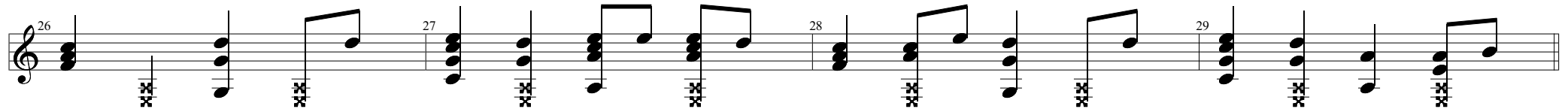
F

G

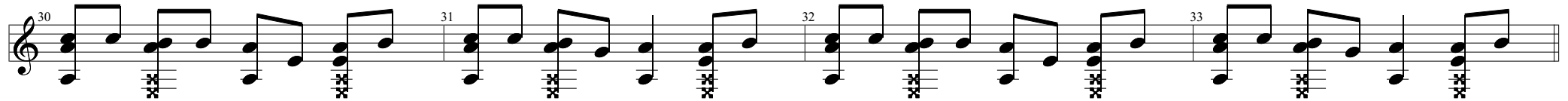
C

G

Am

**Verse 2**

Am

**Chorus**

F

G

C

Am

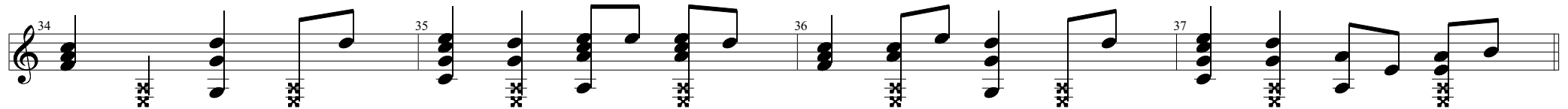
F

G

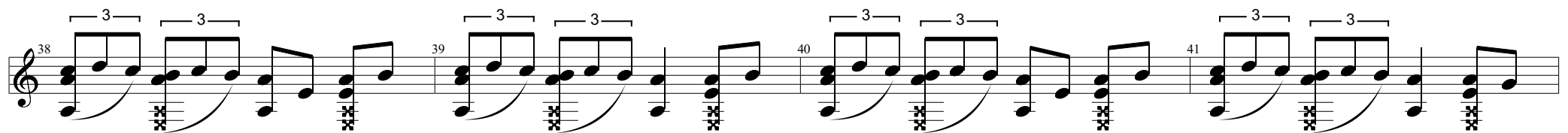
C

G

Am

**Loss**

Am



F G C Am F G C Em Am

42 43 44 45

Verse 3

Am

46 47 48 49

Chorus

F G C Am F G C G Am

50 51 52 53

Verse 4

Am

54 55 56 57

Chorus

F G C Am F G C G Am

58 59 60 61

Loss

Am

Measures 62-69 of the 'Loss' section. The notation is in treble clef with a key signature of one flat (Bb). Measures 62-65 feature a melody of eighth notes with triplets, accompanied by a bass line of chords marked with 'x' symbols. Measures 66-69 continue the melody and bass line, with some measures featuring triplets. Chord labels F, G, C, Am, F, G, Em, and Am are placed above the corresponding measures.

Loss 2

Am

Measures 70-77 of the 'Loss 2' section. The notation is in treble clef with a key signature of one flat (Bb). Measures 70-73 feature a melody of eighth notes, accompanied by a bass line of chords marked with 'x' symbols. Measures 74-77 continue the melody and bass line, with some measures featuring triplets. Chord labels F, G, C, F, G, C, Em, and Am are placed above the corresponding measures.

Loss 3

Am

Measures 78-81 of the 'Loss 3' section. The notation is in treble clef with a key signature of one flat (Bb). Measures 78-81 feature a melody of eighth notes with triplets, accompanied by a bass line of chords marked with 'x' symbols. Chord labels are not explicitly shown for these measures.

82 F G C Em Am 83 F G C Em Am 84 85

Verse 5

Am

86 87 88 89

Chorus

F

G

C

Am

F

G

C

G

Am

90 91 92 93

F

G

C

Am

F

G

C

G

Am

94 95 96 97