

Голубой вагон

Песенка крокодила Гены
Владимир Шаинский, Эдуард Успенский

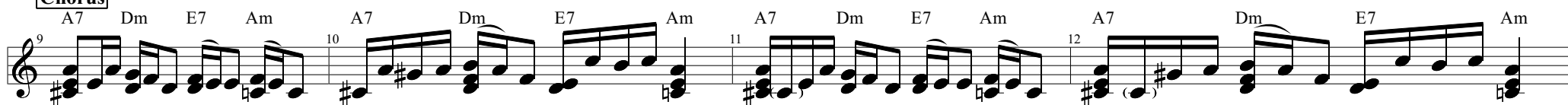
♩ = 70



Verse 1



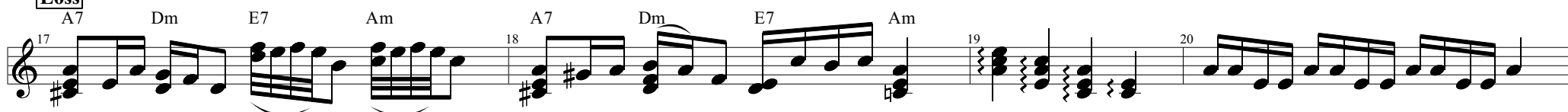
Chorus



Verse 2



Loss



Verse 3



Chorus

Musical notation for the Chorus section, measures 25 to 28. The key signature has one sharp (F#). The chord progression is A7, Dm, E7, Am, A7, Dm, E7, Am, A7, Dm, E7, Am, A7, Dm, E7, Am. The melody consists of eighth and sixteenth notes, often beamed together.

Loss

Musical notation for the Loss section, measures 29 to 32. The chord progression is A7, Dm, E7, Am, A7, Dm, E7, Am, A7, Dm, E7, Am, A7, Dm, E7, Am. The melody features more complex rhythmic patterns, including triplets and sixteenth notes.

Ending

Musical notation for the Ending section, measures 33 to 37. The chord progression is A7, Dm, E7, Am, A7, Dm, E7, Am, A7, Dm, E7, Am, A7, Dm, E7, Am. The melody concludes with a final chord and a double bar line.