

# Mutter

## Rammstein

♩ = 116

Guitar

Em  
*let ring throughout*

C Em/D B

*mf*

Verse 1

Em C B7

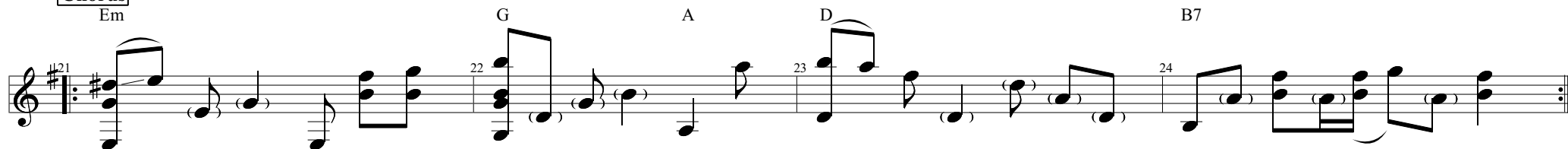
Em C B7

Em C B7

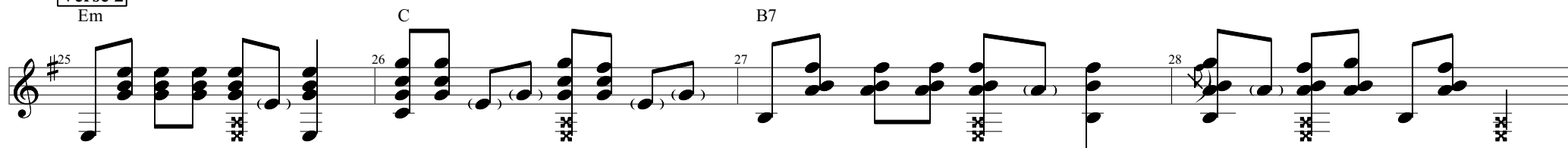
Em C B7

**Chorus**

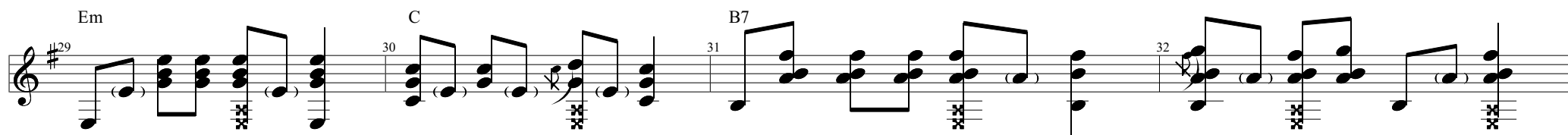
Em

**Verse 2**

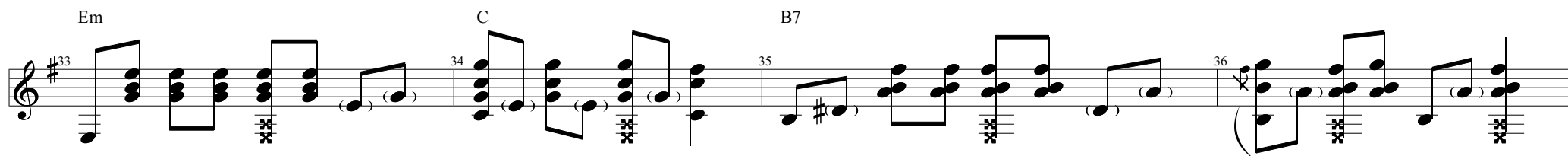
Em



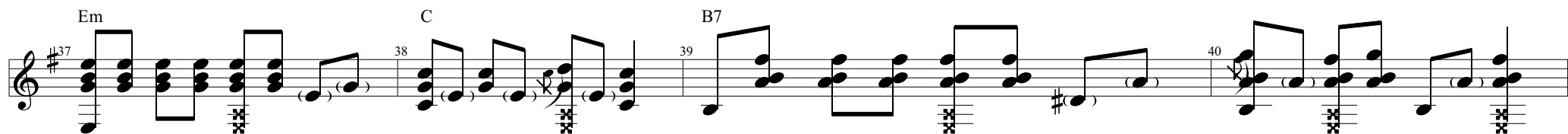
Em



Em



Em



**Chorus**

Em

Measures 41-44. Measure 41 starts with a repeat sign and a key signature change to D major (F#). Measure 42 has a G chord above it. Measure 43 has a D chord above it. Measure 44 has a B7 chord above it. The notation includes various chords and melodic lines.

**Bridge**

C

Measures 45-48. Measure 45 starts with a C chord above it. Measure 46 has a C chord above it. Measure 47 has a D chord above it. Measure 48 has a B7 chord above it. The notation includes various chords and melodic lines.

C

Measures 49-52. Measure 49 starts with a C chord above it. Measure 50 has a C chord above it. Measure 51 has a D chord above it. Measure 52 has a B7 chord above it. The notation includes various chords and melodic lines.

**Chorus**

Em

Measures 53-56. Measure 53 starts with a repeat sign and a key signature change to D major (F#). Measure 54 has a G chord above it. Measure 55 has a D chord above it. Measure 56 has a B7 chord above it. The notation includes various chords and melodic lines.

**Ending**

Em

Measures 57-60. Measure 57 starts with a key signature change to D major (F#). Measure 58 has a G chord above it. Measure 59 has a D chord above it. Measure 60 has a B7 chord above it. The notation includes various chords and melodic lines.