

Believer

Imagine Dragons

♩ = 120

let ring throughout

Ukulele

Ukulele introduction notation in G minor, 4/4 time. The notation shows a sequence of chords and rhythms: 1. Gm (quarter), 2. Gm (quarter), 3. Gm (quarter), 4. Gm (quarter), 5. Gm (quarter), 6. Gm (quarter), 7. Gm (quarter), 8. Gm (quarter), 9. Gm (quarter), 10. Gm (quarter), 11. Gm (quarter), 12. Gm (quarter), 13. Gm (quarter), 14. Gm (quarter), 15. Gm (quarter), 16. Gm (quarter), 17. Gm (quarter), 18. Gm (quarter), 19. Gm (quarter), 20. Gm (quarter), 21. Gm (quarter), 22. Gm (quarter), 23. Gm (quarter), 24. Gm (quarter). The notation includes fingerings (1, 2, 3, 4) and a dynamic marking of *mf*.

Verse

Verse notation in G minor, 4/4 time. The notation shows a sequence of chords and rhythms: 5. Gm (quarter), 6. Gm (quarter), 7. Gm (quarter), 8. Gm (quarter), 9. Gm (quarter), 10. Gm (quarter), 11. Gm (quarter), 12. Gm (quarter), 13. Gm (quarter), 14. Gm (quarter), 15. Gm (quarter), 16. Gm (quarter), 17. Gm (quarter), 18. Gm (quarter), 19. Gm (quarter), 20. Gm (quarter), 21. Gm (quarter), 22. Gm (quarter), 23. Gm (quarter), 24. Gm (quarter). The notation includes fingerings (1, 2, 3, 4) and a dynamic marking of *mf*.

Pre-Chorus

Pre-Chorus notation in G minor, 4/4 time. The notation shows a sequence of chords and rhythms: 21. Gm (quarter), 22. Gm (quarter), 23. Gm (quarter), 24. Gm (quarter), 25. Gm (quarter), 26. Gm (quarter), 27. Gm (quarter), 28. Gm (quarter), 29. Gm (quarter), 30. Gm (quarter), 31. Gm (quarter), 32. Gm (quarter), 33. Gm (quarter), 34. Gm (quarter), 35. Gm (quarter), 36. Gm (quarter), 37. Gm (quarter), 38. Gm (quarter), 39. Gm (quarter), 40. Gm (quarter). The notation includes fingerings (1, 2, 3, 4) and a dynamic marking of *mf*.

25 Gm 26 27 Eb 28 D

Chorus

29 Gm 30 31 Eb 32 D

33 Gm O 34 35 Eb 36 D

37 Gm 38 39 Eb 40 D7

41 Gm 42 43 Eb 44 D

Verse 2

45 Gm 46 47 Eb 48 D7

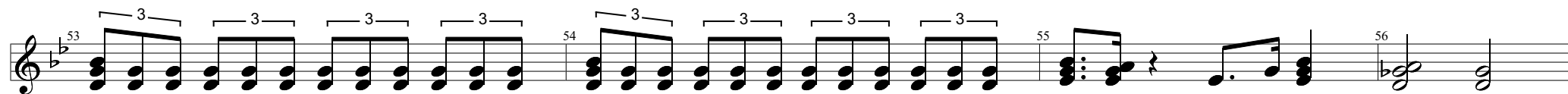
49 Gm 50 51 Eb 52 D O O O O

Bridge

Gm

Eb

D

**Chorus**

Gm

Eb

D



Gm

Eb

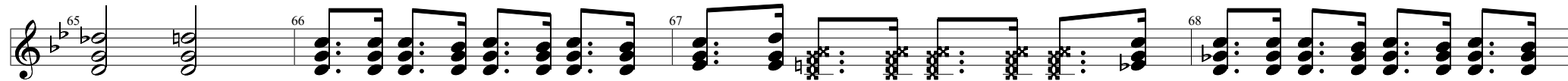
D



Gm

Eb

D7



Gm

Eb

D

